

MINI LED PROJECTOR FOR SWIMMING POOL – WHITE LIGHTING

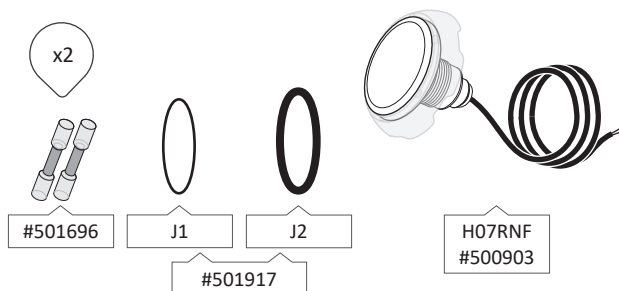


Model : **500859**
Type : 12 LED 5630 / 120°
Color : cold white 6500K
Control : On/Off
Material : Polycarbonate (PC)
1,5" threat to screw in vacuum fitting
Wire connection : 2 screw terminals
2 meters HO7RNF wire 2x1,5mm²
Nomenclature : 9405403990
Code barre : 3700450500859

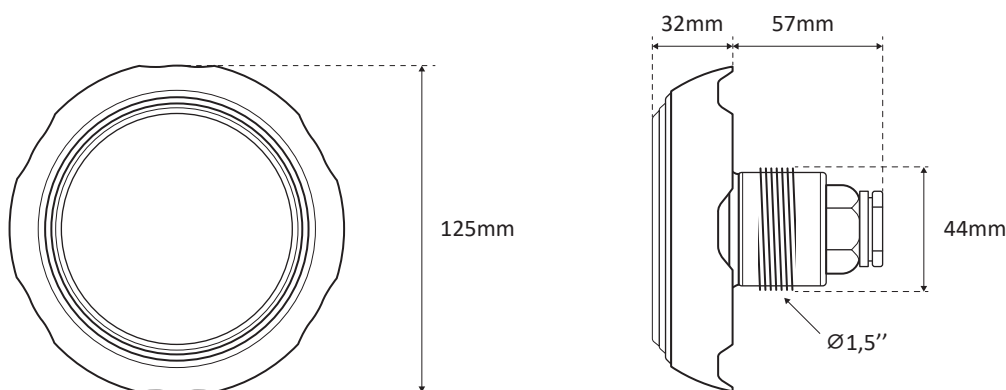
Option :

- Above ground pool installation kit (#501009)
- Inground pool installation kit (#501368)

CONTENTS OF THE PACKAGING



DIMENSIONS



PACKING

Part Number	Box	Weight	Size	Carton	Weight	Size	Pallet	Weight	Size
500859	1U	0,56kg	15x15x15cm	6U	4kg	47x32x16cm	540U	370kg	100x120x167cm

PHOTOMETRY

Ra (IRC) : 85
 Beam angle : 120°
 Nominal luminous flux : 540 lumens max.
 Extractable light source : MPLW-LED
 Light source energy class : E
 This swimming pool luminaire contains an extractable LED light source of type MPLW-LED and energy class (E)



ELECTRICAL PARAMETERS

Instant power max : 5W
 Input voltage : ~12V(AC) 50/60Hz or 20V(DC)
 PF max : 0,66 if ~12V(AC)
 PF max : 1 if 20V(DC)
 Mini power supply ~12V(AC) [(Pi / PF)+20%] : 9VA
 Electric Class : III



CLASS III ~12V(AC)
20V(DC)

CONNECTION

Use a 2 x 1mm² minimum cross section of connecting cable, to adapt according to the distance between the junction box of the projector and the transformer well as the power input.

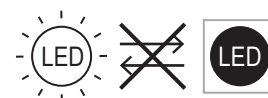


~12V(AC)
or 20V(DC)

USE ONLY WITH A SAFETY TRANSFORMER / DO NOT PLUG IN SERIES /
PROTECT THE CONNECTOR WITH INSULATING GEL

OTHER PARAMETERS

Protection index : IP68
 LED life span : > 10 000h
 On/Off cycles : > 100 000
 Use : This pool light is designed for use in permanent immersion in water with a IP68 waterproof rating. The spin welding assembly process of the optical part with its support, does not allow its reparability. The light source is not replaceable and in case of failure, it is necessary change all the luminaire.



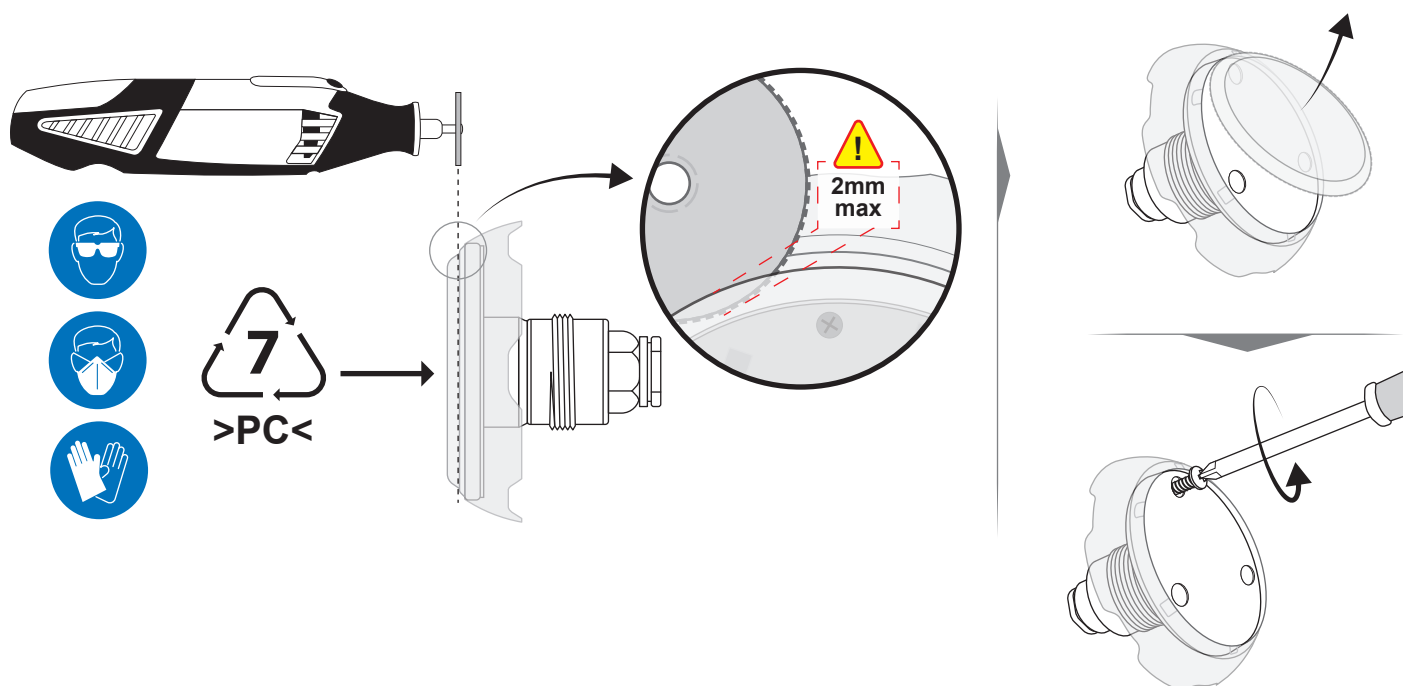
CERTIFICATION

EMC 2014/30/EU Directive.
 EN60598-1 / EN60598-2-18 Norm in all its modifications.

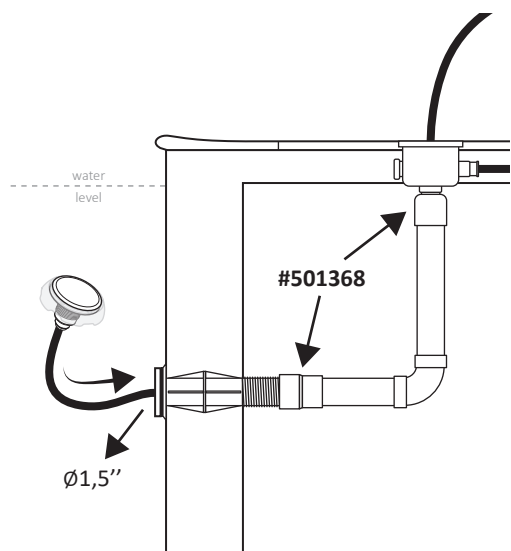


VARIOUS

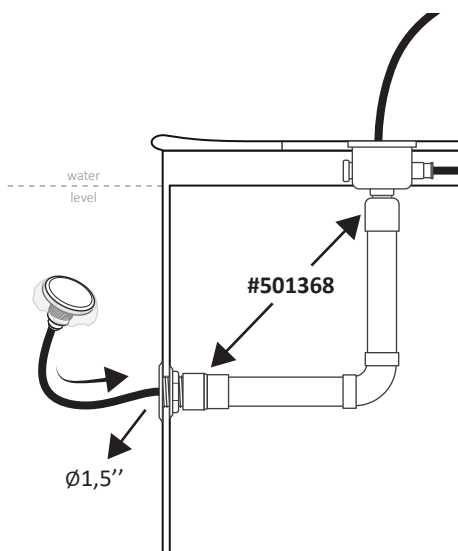
To extract the light source, please follow the instructions below :



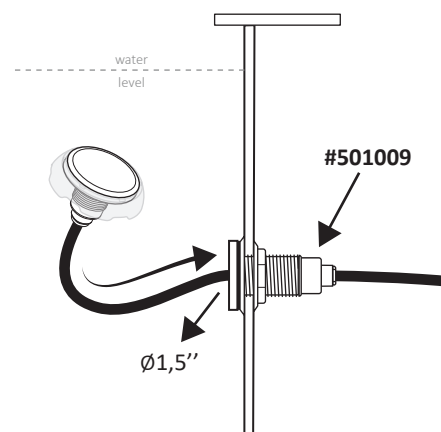
PRINCIPLE OF INSTALLATION



Example for inground
pool with liner



Example for inground
pool polyester



Example for
above-ground pool

For more information, see the product leaflet